

Burgess-Peterson Academy

# GO Team Meeting

May 15, 2025

# Agenda

- I. Call to Order
- II. Roll Call; Establish Quorum
- III. Action Items
  - Approval of Agenda
  - Approval of Previous Minutes:
  - Approval of Uniform Advisory Committee Recommendation
- IV. Discussion Items
  - Uniform Advisory Committee Recommendation
  - 2025 Spring MAPS results
  - Needs Assessment
- V. Information Items
  - Principal's Report
  - Cluster Advisory Team Report – 3/24/2025
  - GO Team Elections
- VI. Announcements
- VII. Public Comment
- VIII. Adjournment

# **Uniform Advisory Committee Recommendation**

# Uniform Advisory Committee Recommendation

- Students and community members completed 500+ surveys to provide feedback.
  - Overwhelmingly positive for a school uniform (appearance, ease, prefer to a free choice option)

**Recommendation:** Continue the BPA Uniform Policy with wording in accordance to APS policy.



**Uniforms are required Monday - Thursday**

**Tops:** Solid Navy, Solid White, Solid Burgundy with Collars

**Bottoms:** Solid Khaki or Solid Navy

**Shoes:** Socks and shoes of your choice daily. Gym shoes REQUIRED on PE days.

**Free Outfit Choice on Fridays**



Collar Required



Plain Required



Socks and Shoes Required



*In accordance with APS policy, students will not be excluded from instruction or disciplined for not wearing the school uniform at Burgess-Peterson Academy.*

# 2025 Spring MAPS Results

## Data Points to Consider

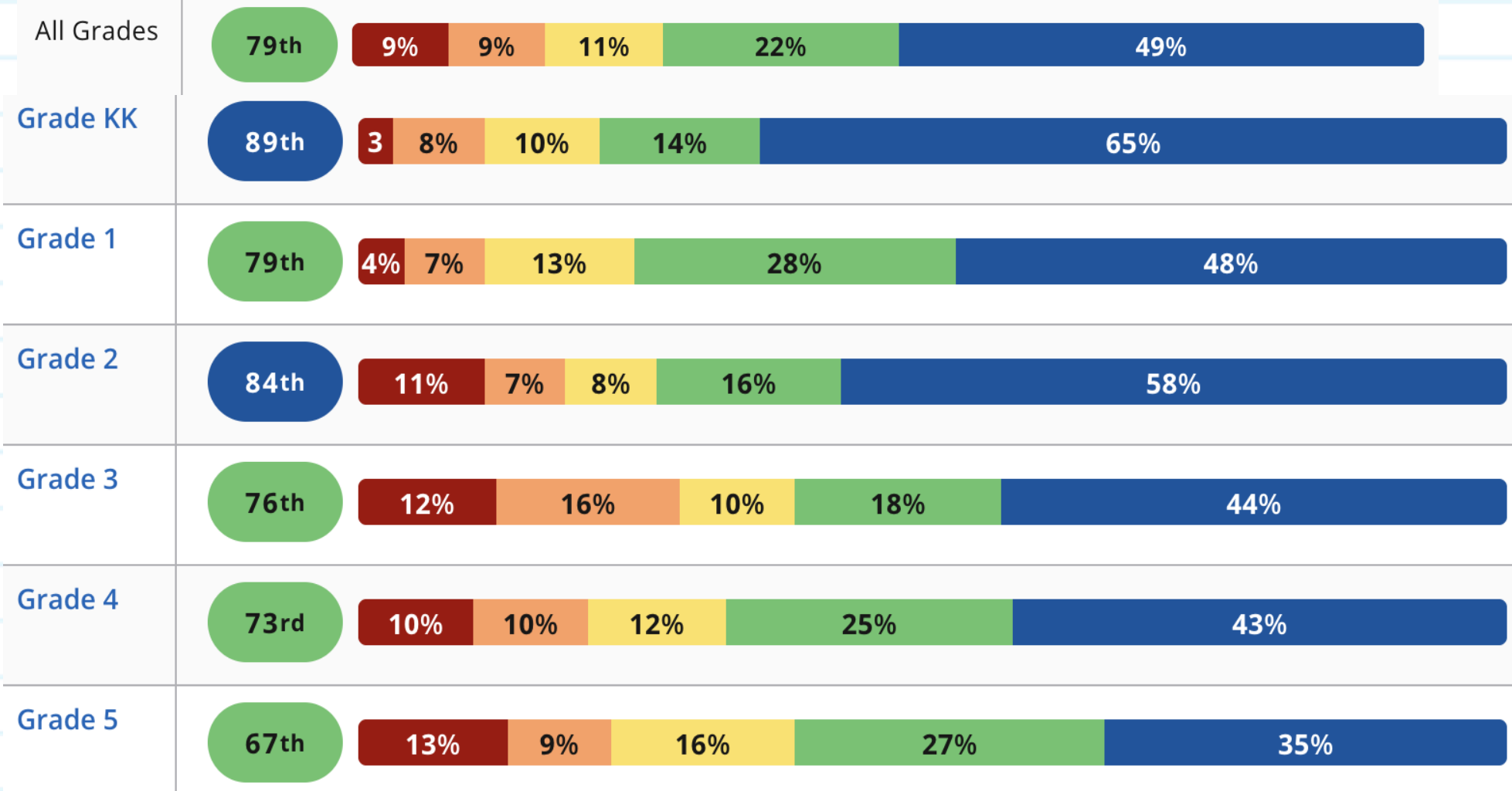
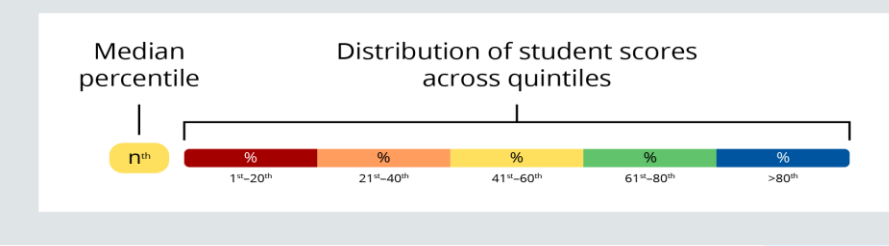
- Spring Results
- Fall to Spring Comparison
  - Literacy
  - Numeracy






# MAP Growth **Reading** - Spring 2025

## School Achievement



All grades average reading achievement - 79th percentile, up from 78th @ Fall

# MAP Growth **Reading** - Spring 2025 - GMAS Predictions



School	Window	Exams				
DISTRICT	Spring 2024-2025	18,291	36%	26%	25%	13%

School	Window	Exams				
Burgess	Spring 2024-2025	367	16%	19%	34%	31%

School	Grade	Window	Exams				
Burgess	02	Spring 2024-2025	102	15%	19%	36%	30%
	03	Spring 2024-2025	87	22%	18%	30%	30%
	04	Spring 2024-2025	92	14%	17%	27%	41%
	05	Spring 2024-2025	86	14%	20%	43%	23%

## GMAS **Reading** Prof.+ Last Year

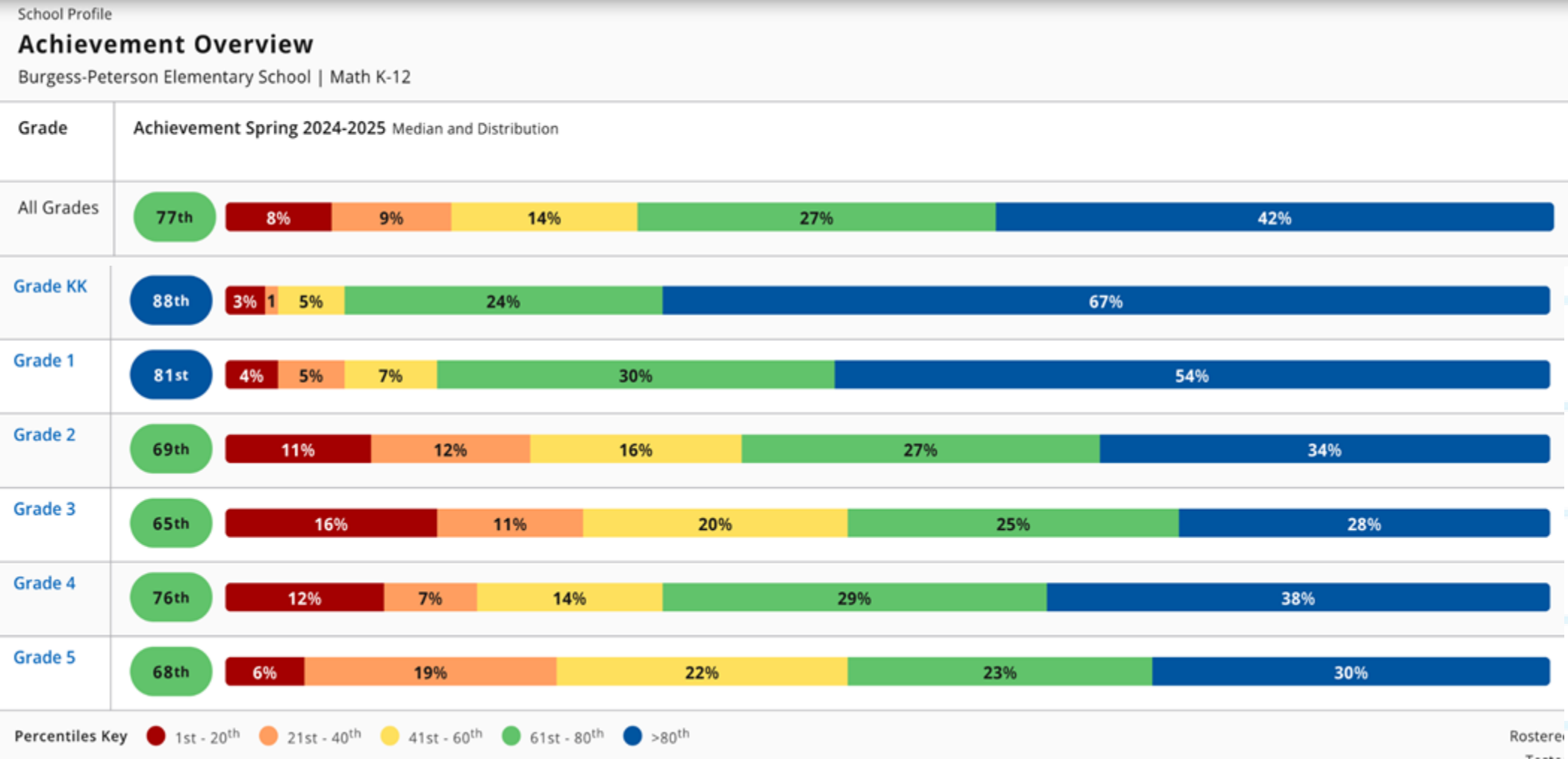
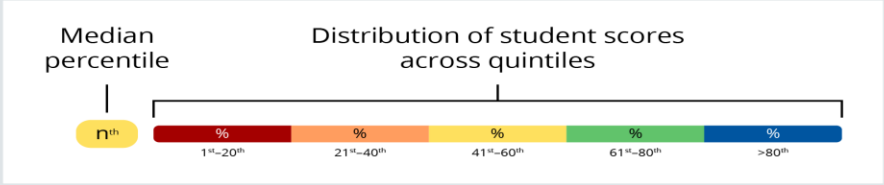
3 <sup>rd</sup> Grade	65%
4 <sup>th</sup> Grade	61%
5 <sup>th</sup> Grade	69%
Overall	64.2%

### Proficiency Prediction

- Distinguished
- Proficient
- Developing
- Beginning

# MAP Growth Math - Spring 2025

## School Achievement



All grades average math achievement - 77th percentile, up from 75th @ Fall



# MAP Growth Math - Spring 2025 - GMAS Predictions

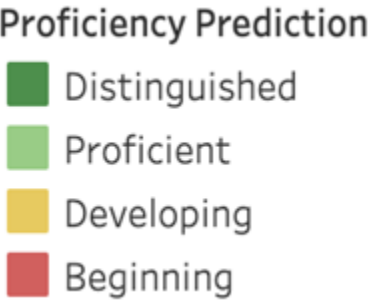


School	Window	Exams				
DISTRICT	Spring 2024-2025	18,171	35%	34%	20%	11%

School	Window	Exams				
Burgess	Spring 2024-2025	365	12%	30%	39%	19%

School	Grade	Window	Exams				
Burgess	02	Spring 2024-2025	102	11%	30%	38%	21%
	03	Spring 2024-2025	85	18%	29%	31%	22%
	04	Spring 2024-2025	92	13%	20%	50%	17%
	05	Spring 2024-2025	86	7%	42%	36%	15%

GMAS Math Prof.+ Last Year	
3 <sup>rd</sup> Grade	68%
4 <sup>th</sup> Grade	63%
5 <sup>th</sup> Grade	59%
Overall	63.6%



# MAP to GMAS Comparison - by Subgroups

Grade	Test and Window	ELA / Reading	Math
All	2024 GMAS	64%	64%
	Fall 2024-2025 MAP	64%	50%
	Winter 2024-2025 MAP	63%	53%
	Spring 2024-2025 MAP	65%	57%
SWD	2024 GMAS	9%	23%
	Fall 2024-2025 MAP	15%	15%
	Winter 2024-2025 MAP	15%	15%
	Spring 2024-2025 MAP	15%	15%
Black or African American	2024 GMAS	44%	42%
	Fall 2024-2025 MAP	43%	28%
	Winter 2024-2025 MAP	38%	31%
	Spring 2024-2025 MAP	44%	37%
Hispanic/Latino	2024 GMAS	92%	92%
	Fall 2024-2025 MAP	83%	78%
	Winter 2024-2025 MAP	94%	82%
	Spring 2024-2025 MAP	89%	67%
Two or more races	2024 GMAS	100%	89%
	Fall 2024-2025 MAP	87%	61%
	Winter 2024-2025 MAP	78%	57%
	Spring 2024-2025 MAP	83%	70%
White	2024 GMAS	81%	86%
	Fall 2024-2025 MAP	81%	71%
	Winter 2024-2025 MAP	87%	75%
	Spring 2024-2025 MAP	84%	78%



# Needs Assessment

## ACTIVITY

### Needs Assessment

During this Needs Assessment, we will look at data from the Spring MAPS administration and identify 2-3 potential needs for the 2025-2026 school year.

This discussion will help school leadership as they prepare for the 2025-2026 school year.



# Needs Assessment: Guiding Questions

- What does this data tell us?
- What good news is there to celebrate?
- Where are growth opportunities?
- What trends do we see in the data?



# ACTIVITY: Strengths & Opportunities

Based on your discussion about the school data, determine point of strength and opportunities for improvement and summarize them below.

Strengths	Opportunities

# Needs Assessment:

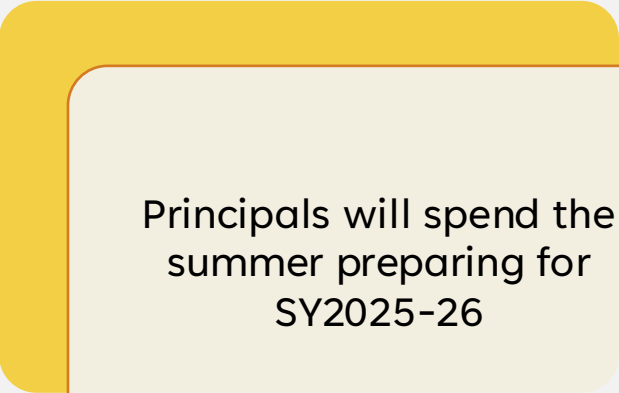
Based on your responses for strengths and opportunities, what must be true for BPA to Achieve and Continue Excellence?

	Need
1	Mindful of gap between subgroups: racial and SWD
2	
3	

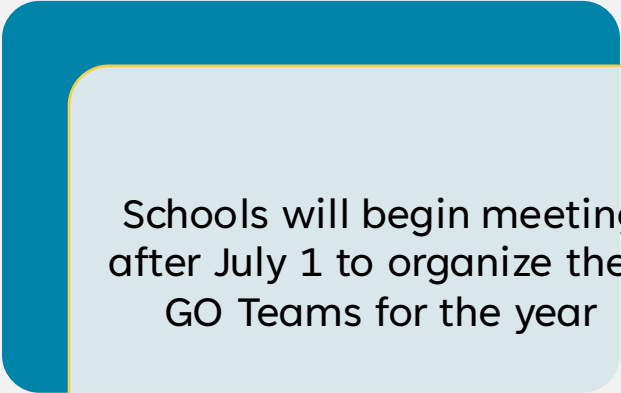




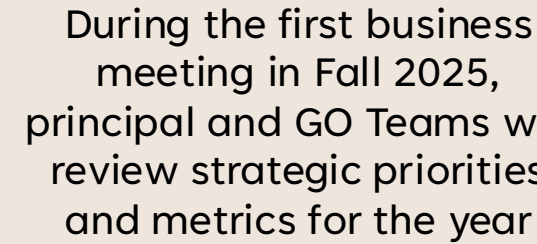
# Next Steps



Principals will spend the summer preparing for SY2025-26



Schools will begin meeting after July 1 to organize their GO Teams for the year



During the first business meeting in Fall 2025, principal and GO Teams will review strategic priorities and metrics for the year

# Information Items



# Principal's Report

A Very Fond  
Farewell!



# A Decade at BPA.....

- Since 2015
  - Enrollment has doubled from 295 to 605 students
  - Reading Scores on GMAS have increased by +33.3%
    - From 30.9% to 64.2% Proficient+
  - Math Scores on GMAS have increased by +33.5%
    - From 30.1% to 63.6% Proficient+
  - Science Scores on GMAS have increased by +34.4%
    - From 25.9% to 60.3% Proficient+



# A Decade at BPA.....

- THREE APS Teachers of the Year! 2020, 2023, 2024
- Georgia's Teacher of the Year 2020
- APS Principal of the Year 2022
- GA Title I Distinguished School 2023
- GA "Beating the Odds" School 2019
- APS Elementary Basketball Champs 2025



# A Decade at BPA.....

I'm so grateful for your help and support!

Thank you!

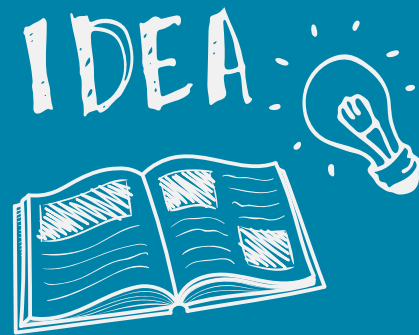




# Additional Information Items

- **March 24, 2025 Cluster Advisory Team Report**
- **GO Team Elections**
  - Congratulations
    - Lidra West (staff) and
    - Amy Oyenuga (parent)

# Announcements



- **SAVE THE DATE:**
  - **Thursday, August 14<sup>th</sup>: First GO Team Meeting of the 2025-2026 SY**
- **GO Team Members**
  - **Complete your end of year surveys (AVAILABLE NOW!** Check your email for the link)
    - Principal Feedback Survey
    - GO Team Satisfaction Survey
  - **Complete your required trainings ASAP**
    - Contact the GO Team Office with any questions



Thank  
You

for yet another  
great year!

